

Science Gallery

Welcome Celebrating

Our Achievements

Future Strategy

Network Members

Numbers Awards

Support and Funding

Impact Stories Our

People Season Advisors

Exhibitions Network

Review 2022–2023



**HOW DOES THE INTERPLAY
BETWEEN HUMAN AND**

**MACHINE BEHAVIOUR
CONTRIBUTE TO THE
FORMATION AND**

**PERPETUATION OF
INDIVIDUAL, SOCIETAL,
AND DIGITAL BIASES?
WHY DO WE THINK?**

**WHY ARE WE EMOTIONAL
BEINGS?**

IS INTELLIGENCE AND THE

**ABILITY TO THINK AND FEEL
RESTRICTED TO HUMANS?**

WHEN DOES OUR

**RELATIONSHIP WITH
ALCOHOL, DRUGS, GAMING,
OR THE INTERNET BECOME**

**COMPULSIVE RATHER
THAN FUN?**





SCIENCE GALLERY IGNITES CREATIVITY AND DISCOVERY WHERE SCIENCE AND ART COLLIDE

WHEEL BY HIROMI TANGO, DR EMMA BURROWS
AND DR TILMAN DINGLER

SCIENCE GALLERY BENGALURU WILL FURTHER ESTABLISH BENGALURU AS THE CITY OF IDEAS

KIRAN MAZUMDAR-SHAW
CHAIRPERSON SCIENCE GALLERY BENGALURU
FOUNDER AND CHAIRPERSON BIOCON



WELCOME

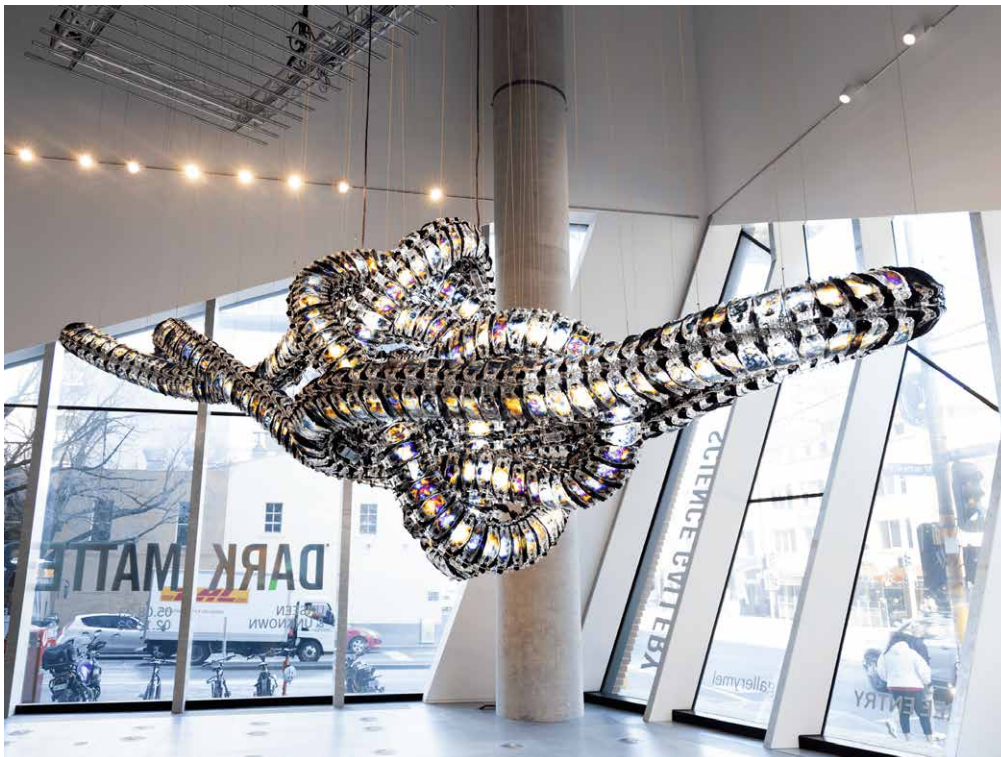
Welcome to this first edition of Science Gallery International Network Review, highlighting our members' achievements and breadth of engagement over the past two years.

The Network's public programming, learning, events and exhibitions engaged more than 500,000 enquiring minds, over 7000 researchers and artists, and drew on cutting-edge transdisciplinary research from our member universities.

Looking forward to the next decade, we seek to build on this success. The Science Gallery International Strategy 2024–2030 sets out our ambitions for deeper collaboration, diversity and sustainability across the Network.

We hope you enjoy this review, which is a testament to the global reach and impact of our Network.

Thank you for your part in the Science Gallery story.



CHROMA V BY YUNCHUL KIM



ROSE HISCOCK
Chairperson
Science Gallery
International



SARAH DURCAN
Executive Director
Science Gallery
International

CELEBRATING OUR ACHIEVEMENTS



THE UNCANNY VALLEY OF BREATH BY ANTONY NEVIN,
CARLOTTA AOUN, CORMAC PATRICK ENGLISH AND
EDWARD STOREY

The past two years have brought important milestones for our Network with significant openings, extraordinary public programming, prestigious awards, and major philanthropic support.

The Network continues to contribute to the resilience and imaginative flourishing of our communities and our key audience of young people. We celebrated the opening of Science Gallery Melbourne in 2022, Science Gallery Bengaluru in 2023, and welcomed Tecnológico de Monterrey, Mexico as the Network's newest member with the launch of their inaugural exhibition JUMPSTART in November 2023. Having secured significant strategic funding from the Irish government, Trinity College Dublin will reopen a reimagined Science Gallery Dublin in 2024. By the end of 2024, the Network will reach a major milestone when five permanent gallery spaces will be fully operational.

Our members have garnered substantial philanthropic and corporate support over these years, notably Bengaluru's founding philanthropic gift of over Rs 56 crore (EUR 6+m), underlining the potential of public-private partnerships of universities, philanthropists and government to help Science Gallery thrive.

We are thankful to all our members and for their participation and valued contributions to developing the Network. We recognise it has been a time of continuing upheaval for many universities post-pandemic. We said farewell to our colleagues in Detroit and Rotterdam. We applaud the fine work they achieved through Science Gallery, and wish them well.

In programming, the Network explored themes including addiction, artificial intelligence, bias, carbon and the environment, dark matter, evolution, genders, justice, mental health, and swarm behaviour.



PARTICLE SHRINE, SCIENCE GALLERY LONDON
BY TEPPEI KATORI, CHRISTO SQUIER AND CHRIS BALL

The Network and its people won several international awards, which we celebrate with pride in the Awards section of this Review.

Collaborative leadership is a hallmark of our Network. At Science Gallery International Rose Hiscock, Director of Museums and Collections, University of Melbourne was appointed Chairperson, at the end of Dr Patrick Prendergast's term. Beatrice Pembroke, Executive Director of Culture at King's College London, was appointed Vice-Chairperson. Sarah Durcan was appointed to the role of SGI's Executive Director after Andrea Bandelli's departure in August 2022. We thank Dr. Bandelli for his six years of dedicated service to the Network

Each Network Member is led by an exceptional Director and University leadership. Each year the Directors come together for the Network Directors' Forum, which advances collaboration across the Network. Working groups in research, programming, and youth engagement deepened our collective knowledge and joint programme activities to maximise our network effect. Their work informed our 2023 forum, and in 2024 they will begin the work of developing our first Network Strategy.

Science Gallery International commissioned an Impact Framework report from The University of Melbourne, providing the network with a systematic way to measure and report on impact, focussed on young people, and also the research impact and public profile for the university. This work will inform the development of a research charter for the Network in 2024.

STRIDING CONFIDENTLY INTO THE FUTURE

As we look to the future the value of the Science Gallery Network is increasingly clear. The manifold challenges of our time – increasing geopolitical instability, the impacts of climate change, and the aftermath of a global pandemic – can only be addressed through innovative thinking, the alignment of expertise across disciplines and borders, and the activation of future generations of artists, researchers and technology trailblazers.

Our strength as a Network lies in our members. Each member gallery is a place of disruptive creativity and collaboration, with emphasis on its local and youth communities. Science Gallery offers a place where difficult discussions can be held and boldness is valued. We endeavour to ensure our initiatives are increasingly youth-led and centred. We strive to deepen the Network’s reach, impact and collaborative ties over the coming decade.

Our commitment is to empowering the next generation to tackle these pressing challenges with innovative thinking and open dialogue, bolstering their hope and resilience.

Our vision is of a thriving, diverse, influential and interconnected network, serving its communities through facilitating multidisciplinary art-science practices, by shaping public discourse around their impact, and convening conversations that drive cultural change.

Bringing art and science together offers rich creative opportunities to help us better understand our world. There is growing recognition and funding for inclusive, participatory, and engagement methods in research.

All of this reinforces the value of the Science Gallery Network.

TAKE ACTION AND AMPLIFY YOUR IMPACT THROUGH SCIENCE GALLERY

SHARE

your research, your innovation projects, your unique creative collaborations.

CONNECT

with fellow thought leaders across the Network.

EXPLORE

more of the possibilities for how Science Gallery can elevate your Strategy, and student, community and research impact.

START A CONVERSATION

with your colleagues, your community, and transdisciplinarity champions.

SGI IS COMMITTING TO THIS VISION IN OUR 2024-2030 STRATEGY

SGI will continue to build resilience and sustainability of the Network by amplifying the impact of individual galleries and the Network as a whole, supporting high-quality cutting-edge programming, and creating opportunities for meaningful collaborations.

SGI will leverage the benefits of an international network by convening discussions between the partners who currently support Science Galleries. We will work closely with Network leaders to seed more externally-supported cross-Network initiatives.

Young people, primarily those aged 15–30, are at the heart of Science Gallery’s vision. Programming is designed to inspire, educate and support young people, through a collaborative and inclusive process. We will strengthen this approach over the coming decade and increase the involvement of young people in our processes and programmes.

NETWORK MEMBERS 2022–2023

The Science Gallery Network is an international ecosystem of leading universities that drives collaboration, transforms communities, and empowers young people through art-science experimentation and transformative experiences.

Science Gallery:

- Engages students and young people
- Drives cutting-edge conversations
- Catalyses international collaboration
- Cultivates innovative research
- Engages local communities

**ATLANTA
BENGALURU
BERLIN
DETROIT
DUBLIN
LONDON
MELBOURNE
MONTERREY
ROTTERDAM**



MICHIGAN STATE
UNIVERSITY



Trinity College Dublin
Coláiste na Tríonóide, Baile Átha Cliath
The University of Dublin

KING'S
College
LONDON



THE UNIVERSITY OF
MELBOURNE



Tecnológico
de Monterrey

Erasmus MC
Erasmus

530k+

Visitors had a Science
Gallery experience

1500+

Researchers & artists

300+

Programmes
& events annually

22

Exhibitions

7700+

Researchers and artists
engaged with open calls

150

Press and media outlets
covered Science Gallery

400+

International
participants in
Youth Symposium

1.2m+

Website engagement

ENGAGING STUDENTS AND YOUNG PEOPLE



BUGS AGAINST THE BINARY BY LAURI PAVLOVICH

YOUNG PEOPLE AT THE CENTRE OF IDEAS FOR THE FUTURE

Just Futures is Science Gallery London's residency programme for young and emerging creatives, activists and convenors to experiment with ideas for what just futures could look like. The 2023 residents, collective The Spit Game UK, developed a research-based approach to elevating the voice and the power of young Black talent, inform their own creative practice; and to make new film work in response to existing areas of King's research.

FROM STUDENT TO EXHIBITING ARTIST

Inspired by their secondary school excursion to Science Gallery Melbourne, Lauri Pavlovich went on to create their own work. *Bugs Against The Binary*, exploring gender and sexuality in the animal kingdom, was exhibited in 2023's BREAKING THE BINARIES exhibition.

Lauri came through our School's Program as a high school student and put in a submission through the open call. It's about centering around young people and providing them with opportunities to share their experiences and perspectives.

DR RYAN JEFFERIES
DIRECTOR SCIENCE GALLERY
MELBOURNE



**DRIVING
CUTTING EDGE
CONVERSATIONS**



WE'RE ALL SEARCHING FOR
REST BY WILLIAM MASSEY



**PUSHING TECHNOLOGICAL AND
CREATIVE BOUNDARIES**

Renowned performance artist STELARC collaborated with academics from several faculties at the University of Melbourne for the SWARM exhibition at Science Gallery Melbourne to create an eight-metre-high kinetic sculpture that could sense the presence of humans, *Anthropomorphic Machine*. Using the principles of human body structure, this enormous machine reacted in real time to visitors' gestures and movements.

Stelarc created the *Anthropomorphic Machine* in collaboration with Dr Paul Loh, David Leggett, Psyche Hou, Qiushi Zhou, Gabriele Marini, Dr Eric Schoof, Melbourne School of Design, School of Computing and Information Systems, LLDS Architects, Pelican Studios and Festo.

**EXAMINING ADDICTION AND
RECOVERY ACROSS BORDERS**

HOOKED demonstrated how collaboration across the Network can successfully create tailored exhibitions for different local contexts. The re-curation and localisation of the Science Gallery London exhibition (from 2018) to Atlanta provided the opportunity to interpret and examine a universal theme through community perspective.

We get to understand addiction as a very human journey, highlighting local individuals with lived experiences and amplifying a range of Atlanta-based artists.

FLOYD HALL
CO-CURATOR



CATALYSING INTERNATIONAL COLLABORATION

EXPLORING MENTAL HEALTH ACROSS CULTURES

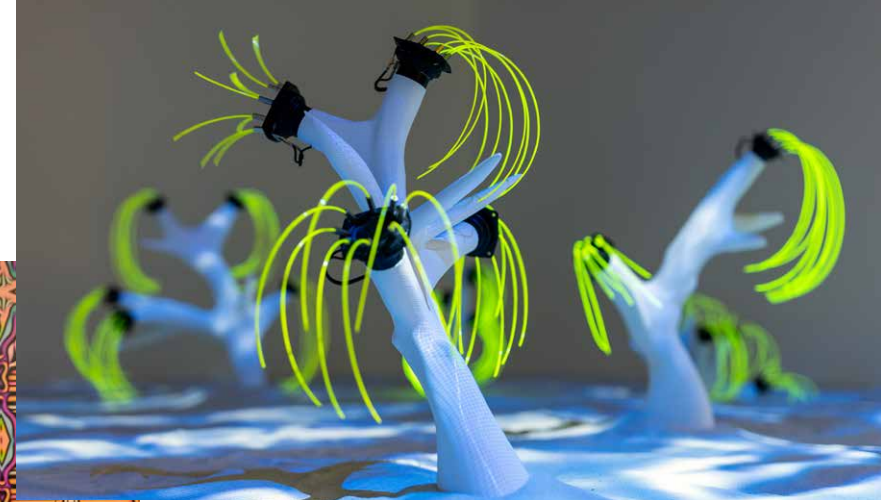
Developed as a reinvention of Melbourne's MENTAL exhibition, MENTAL: Colours of Wellbeing was co-curated by ArtScience Museum Singapore and Science Gallery Melbourne. It featured 24 large installations and exhibits by artists and scientists from around the globe and included seven works by local and regional artists exploring the topic of mental health through a Southeast Asian lens.

ART SCIENCE RESIDENCIES CHALLENGE PERSPECTIVES ON OUR PAST AND OUR FUTURE

Science Gallery Berlin's *Art of Entanglement* residency, a collaboration with the Berlin Institute for the Foundations of Learning and Data (BIFOLD), brought together Italian artist Marco Barotti and cutting-edge researchers to expand perspectives in the fields of artificial intelligence and the relationship between big data management and machine learning.

Technische Universität Berlin's world-renowned Mineralogical Collections formed the basis of Swedish-Irish artist Niamh Schmidtke's examination of deep geological time.

The EARTH research residency is supported by the Swiss foundation Fondation Didier et Martine Primat.



CORALS BY MARCO BAROTTI



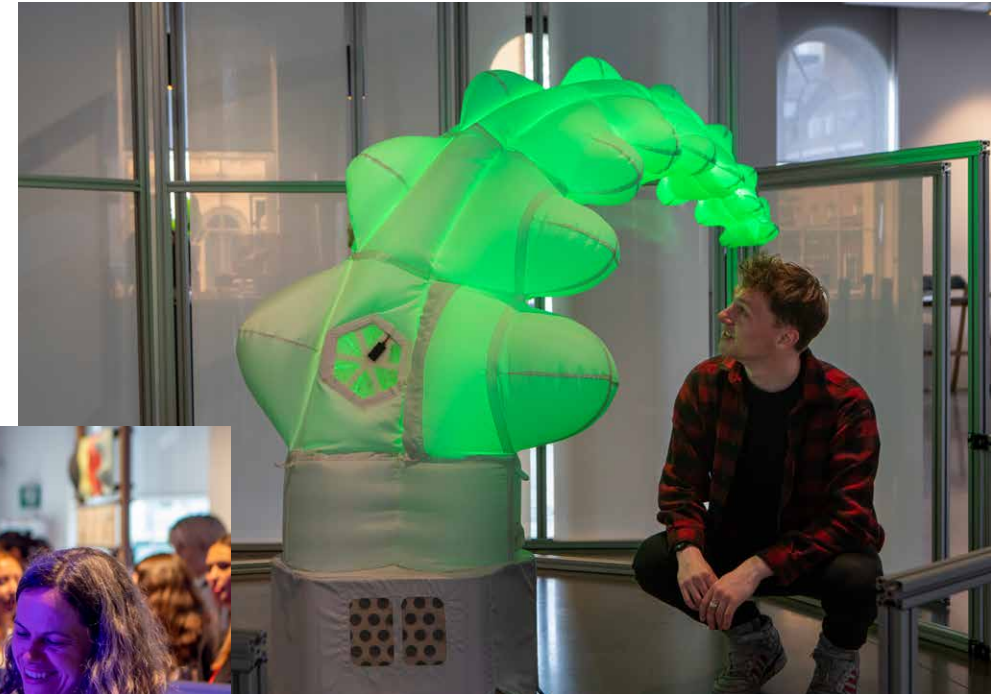
CULTIVATING INNOVATIVE RESEARCH

PUBLIC PARTICIPATION INCREASED DATA FOR RESEARCH

Sprout was an interactive robotic piece by Air Giants in collaboration with researchers Oya Celiktutan, Jeffrey Chong, Theodore Lamarche and Bowen Liu as part of Science Gallery London's exhibition *AI: WHO'S LOOKING AFTER ME?* Data collected from gallery visitors through interactions with *Sprout* informed researchers about how humans use space as a form of non-verbal communication, facilitating more effective communication between humans and robots.

BIRDSONG KARAOKE DEMONSTRATING ADDICTION NEURAL PATHWAYS

Tune / Reward by Summer Krinsky in collaboration with Dr. Sam Sober, examined the role of the neurotransmitter dopamine in vocal skill practice of birds. Krinsky, (a composer, multi-instrumentalist, audio engineer, and creative coder), worked with Dr. Sober, a neuroscientist at Emory University, to share their research which offered valuable insights into how the dopamine pathway works. Originally commissioned by Science Gallery Atlanta, it was loaned as part of the inaugural exhibition for Science Gallery Monterrey.



SPROUT BY AIR GIANTS IN COLLABORATION WITH OYA CELIKTUTAN, JEFFREY CHONG, THEODORE LAMARCHE & BOWEN LIU



TUNE / REWARD BY SUMMER KRINSKY

ENGAGING LOCAL COMMUNITIES



SEED CABINET BY KATERIE GLADDYS,
ANNA PRIZZIA AND MELISSA DESA



DESTINATIONS BY
SANITHNA PHANSAVANH

OPEN ACCESS TO LEARNING THROUGH AN INTERDISCIPLINARY LENS

The freely accessible OPEN COURSEWARE by Science Gallery Bengaluru brought together resources from exhibition seasons. Topics covered in the Open Courseware on CARBON were also covered with optional in-person taught sessions. These resources are crucial to shaping a new climate education model in formal education. The online modules — with contextual documentaries, hands-on exercises, and climate change research from India — enable learners to think critically about climate injustice, differentiated responsibilities, loss of livelihoods and biodiversity.

AMPLIFYING YOUNG VOICES FOR SOCIAL JUSTICE.

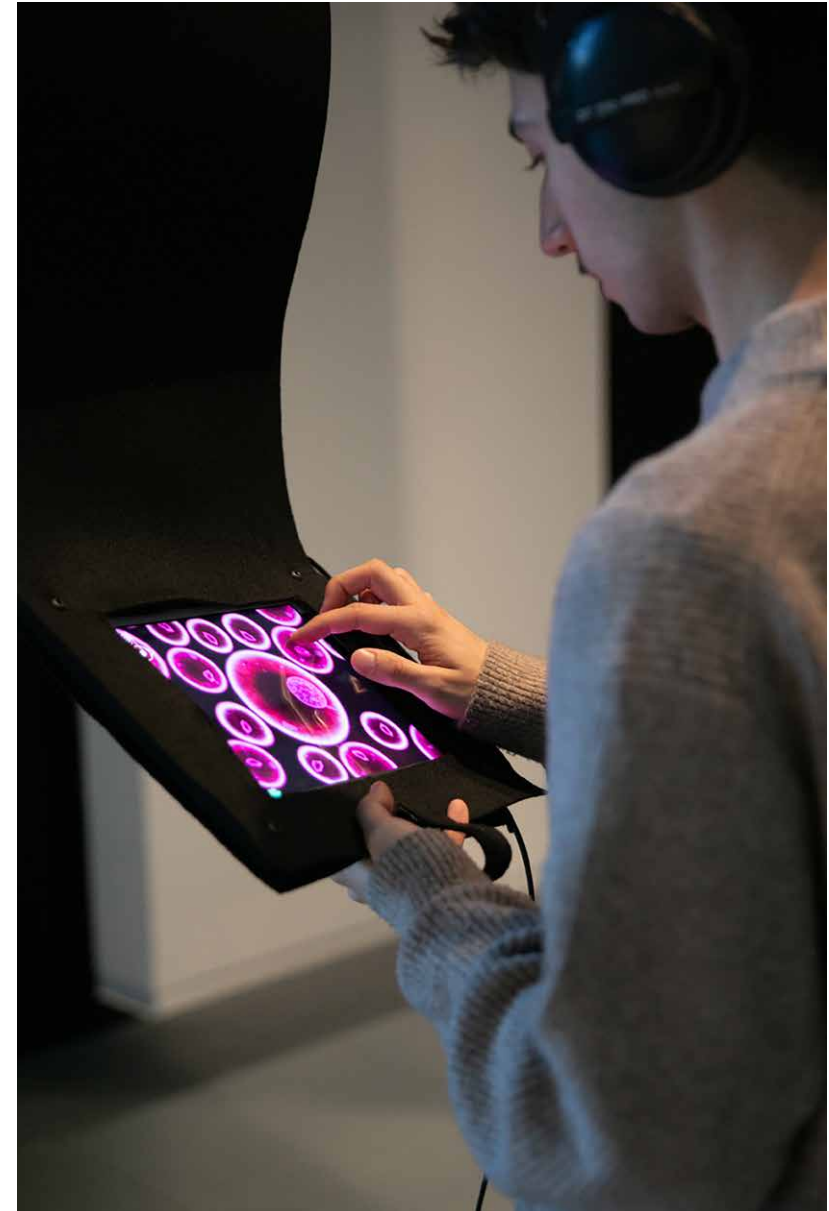
The Calls for Justice interactive experimental podcast from Science Gallery Atlanta in partnership with WABE, the PBS and NPR affiliate of metropolitan Atlanta, invited public participation and young people to engage and contribute to conversations on justice. The podcast featured contributions from gallery visitors that focused on themes such as discrimination, power dynamics, gatekeeping and rights concerning name, image and likeness.



SEESAW BY STEPHANIE BROWN

THIS IMMERSIVE, MULTI-DIMENSIONAL EXPERIENCE FOSTERS A DYNAMIC NEW MODEL FOR ENGAGING WITH OUR STUDENTS, FACULTY, AND THE CITY AT LARGE. SCIENCE GALLERY BUILDS OUR UNDERSTANDING OF COMPLEX ISSUES

DR. DEBORAH W. BRUNER
SENIOR VICE-PRESIDENT OF RESEARCH
AT EMORY UNIVERSITY



AWARDS

DR. JAHNAVI PHALKEY

Infosys Prize 2023 in Humanities

ROSE HISCOCK

Change-maker of the Year,
Victorian Museums and Galleries Awards 2023

THE PILOT XPERIMENTER PROGRAMME AT SCIENCE GALLERY BENGALURU

Falling Walls,
Future Learning Award 2022

SCIENCE GALLERY INTERNATIONAL

International Engagement Award 2022,
Education Awards Ireland

SCIENCE GALLERY MELBOURNE

2023 Victorian Architecture Awards,
Interior Architecture

SCIENCE GALLERY MELBOURNE

Museums and Galleries National Award winner
Australian Museums and Galleries Association,
Permanent exhibition or Gallery fit-out

SCIENCE GALLERY MELBOURNE

Journalism student podcasts for SWARM,
Bronze Award at the New York Radio festival
awards for best student documentary



TRANSFORMATIONAL GIFTS

Leveraging Science Gallery's international reputation, Network members were successful in securing significant support from philanthropists, corporations and foundations. This funding enabled members to further engage with their local communities and the public and to continue fostering interdisciplinary collaboration and international exchange.

Philanthropists Kiran Mazumdar-Shaw, Kris Gopalakrishnan, and Rohini Nilekani contributed Rs 51 crore (€6M) to Science Gallery Bengaluru, marking the largest donation across the Network to date.

Science Gallery Melbourne received philanthropic and sponsorship contributions of AUD \$890,000 (€540k) in 2023 and built a significant partnership with the Victorian Government Department of Education.

The gallery continues to honour and thank transformational partners Peter and Ruth McMullin.

TTK Prestige Limited corporate responsibility grant of Rs 5 crore (€500k) and Samagata Foundation grant of Rs 5 crore were contributed to support Science Gallery Bengaluru's Public Lab Complex.

We thank all those whose generous support makes Science Gallery possible.



DR JAHNAVI PHALKEY, KIRAN MAZUMDAR-SHAW, KRIS GOPALAKRISHNAN AND ROHINI NILEKANI



TTK PRESTIGE LIMITED CONTRIBUTED A GRANT OF RS 5 CRORE TO SUPPORT SCIENCE GALLERY BENGALURU'S PUBLIC LAB COMPLEX.



ROSE HISCOCK, RYAN JEFFERIES AND SCIENCE GALLERY TEAM WITH PETER AND RUTH MCMULLIN VICE-CHANCELLOR PROFESSOR DUNCAN MASKILL AND VICTORIAN MINISTER FOR EDUCATION NATALIE HUTCHINS

IMPACT

Mediators and Entrepreneurial Innovation: Meta-Flux

Mediators are the public face of Science Gallery. They are young tertiary students and graduates with a passion for science, technology and art, sparking peer-to-peer conversations with the public. As well as supporting Science Gallery, mediators gain invaluable skills.

Meta-Flux creates AI-powered solutions for accelerating lung cancer treatment. Founders Lee Sherlock and Brendan Martin credit their experience as mediators at Science Gallery Dublin for equipping them with invaluable entrepreneurship skills. Lee, Brendan and their fellow co-founder Sinah Behsanger have backgrounds in biochemistry, data analytics, and artificial intelligence.

Lee, the CEO of Meta-Flux, acknowledges Science Gallery as the place where he first grasped the essence of leadership. The mediator model facilitated their critical thinking and interpersonal skills, enhanced their student experience, and developed their creative capacity—all crucial for their future careers.

Deviating from conventional pitching advice in their start-up phase, they returned to their Science Gallery roots, fostering engagement and understanding of their mission, resulting in greater funding success.

Lee and Brendan emphasise the importance of adaptability and creativity, values instilled in them by Science Gallery. Their connection with the Network remains strong, with collaborations and continued engagement envisioned in the future.



BEING A MEDIATOR IS A UNIQUE ROLE; A CHANCE TO NURTURE YOUR OWN SPECIAL EXPERTISE AND TO ABSORB THE KNOWLEDGES EMBRACED BY A SPECIAL TEAM; A GUARANTEED EXPLORATION OF THE WORLD'S MOST EXCITING AND INTRIGUING!

SCIENCE GALLERY MEDIATOR



Inclusive Education: Empowered Learners

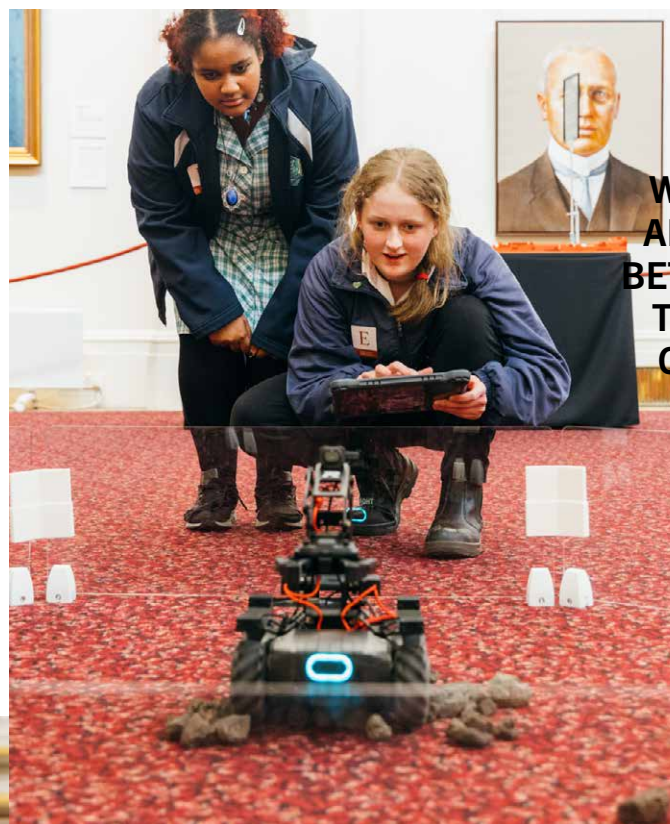
Science Gallery Melbourne fulfilled its mission to lead inclusive STEAM education through two marquee collaborations: the STEM Centre for Excellence and Mission Control.

The STEM Centre for Excellence, a collaborative venture between Science Gallery Melbourne, the University of Melbourne and the Government of Victoria, redefines learning for secondary school students. By focusing on transferable 21st-century skills while blending scientific rigour and artistic exploration, the Centre's cutting-edge programs help learners access untapped creative opportunities through design thinking.

Mission Control, a programme jointly designed with the Australian Space Agency and the Parliament of Victoria, further demonstrated Science Gallery Melbourne's capacity for pushing the bounds of inclusive education. By mirroring the parliamentary process, Mission Control invites students and young people to share data and information, debate ideas and find solutions, making democratic decisions through both science and civics.

Our programmes blend together a whole bunch of different subject areas because we know that when young people go out into the world, they're not existing in subject silos. They're going out and using all of the skills and knowledge that they've garnered over their educational journeys to live fulfilling lives.

JESSE CHAMBERS
STEAM EDUCATOR



WHAT IS SO PURPOSEFUL ABOUT THE PARTNERSHIP BETWEEN OUR COLLEGE FOR THE DEAF AND THE STEM CENTRE OF EXCELLENCE IS THAT IT'S ONE OF AUTHENTICITY.

MARG TOP
PRINCIPAL OF THE VICTORIAN
COLLEGE FOR THE DEAF



Advances in Research and Pedagogy

In 2023, Science Gallery Melbourne, Bengaluru and Atlanta teamed up to advance youth climate action, resulting in an exhibition at the United Nations Climate Change Conference (COP28).

Initially developed by University of Melbourne’s SWISP Lab and Sci-Curious, Science Gallery Melbourne’s youth steering committee, Hak.io (Hacking the Anthropocene dot input dot output) is a mobile education kit designed to provoke exploration, examination and querying, motivating young people to identify their own climate stories and to connect their local experiences with global challenges and opportunities. To broaden and deepen the applications of this card-based tool, Hak.io was re-hacked by Science Gallery Bengaluru mediators as part of the CARBON exhibition.

Researchers Prof. Kate Coleman and Dr. Sarah Healy lead SWISP Lab and its initiative Hacking the Anthropocene: *Digital Dispositions for Learning with the Land*. In addition to invigorating community engagement in climate action, Hacking the Anthropocene is a research program that aims to invite young people to leverage collaborative and creative problem-solving as a means to co-create intercultural climate futures.

With Emory Climate Talks and Science Gallery Atlanta’s Faculty Research Fellow Prof. Eri Saikawa, Prof. Coleman and Dr. Healy presented the artefacts and outcomes of Hak.io at COP28. The exhibition highlighted the work of young people in climate action and invited attendees into transdisciplinary research at the intersection of art, data, design and digital technology in climate science. This cross-Network collaboration continues a Science Gallery series of hackathons for cultural and educational advancement.





**THE ARTWORKS
SHOWCASED WITHIN SCIENCE
GALLERY EXHIBITIONS
WEAVE TOGETHER OUR
UNIVERSITY RESEARCH, OUR
COMMUNITY'S SPIRIT, AND
THE CREATIVITY OF ARTISTS**

**PROFESSOR SHITIJ KAPUR
PRESIDENT AND PRINCIPAL
OF KING'S COLLEGE LONDON**

SCIENCE GALLERY PEOPLE



ALEXIS R. FAUST**Director of Science Gallery Atlanta**

Previously executive director of Aullwood Audubon (Centre of the National Audubon Society), CEO of Taltree Arboretum & Gardens and executive director of the University of Arizona Science Centre.



FLOYD HALL**Creative Producer of Science Gallery Atlanta**

BSc Mathematics, BSc Mechanical Engineering and MBA from Columbia University.



DR MIGUEL ALEJANDRO GONZÁLEZ VIRGEN**Director of Science Gallery Monterrey**

Ph.D in Art History, Master of Architecture from Harvard University's Graduate School of Design.



DR JAHNAVI PHALKEY**Founding Director of Science Gallery Bengaluru**

Ph.D in History of Science and Technology, Associate, International Centre for Theoretical Sciences.



DR RYAN JEFFERIES**Director of Science Gallery Melbourne**

PhD in Biomedical Science, Director of Science and Academic, Museums and Collections and Fellow of the Centre of Visual Art, University of Melbourne.



SIDDHARTH KHAJURIA**Director of Science Gallery London**

Cultural producer and programmer, previously responsible for a public programme of experimental projects at the Barbican Arts Centre, London



FRED BALVERT**Director of Science Gallery Rotterdam**

Strategic Communications Advisor, Research and Education, Erasmus MC.



DR KERSTIN WAGNER**Director of Science Gallery Berlin**

Ph.D in biochemistry and research coordinator, with a background in dance studies.



DEVON AKMON**Director of Science Gallery Detroit**

Leader in cultural management and informal learning, core faculty member in MSU's Arts, Cultural Management & Museum Studies programme.



PROFESSOR GERARD MC HUGH

MA, Ph.D, FCCA, FTCD. Associate Professor in Accounting & University Dean of Development, Trinity College Dublin.

SEASON ADVISORS

SCIENCE GALLERY UNIQUELY DRAWS ON A WIDE COHORT OF EXPERTS TO INFORM AND EVOLVE OUR PUBLIC PROGRAMMING AND INFORMAL LEARNING.

Elisabetta Barberio

Director of the ARC Centre of Excellence for Dark Matter Particle Physics

Diego Blas

Research Professor at the Institut de Física d'Altes Energies (IFAE), The Barcelona Institute of Science and Technology (BIST)

Mónica Bello

Head of Arts at CERN

Jill Bennet

Cultural Theorist

Bernadette Bensaude-Vincent

Historian of Science

Luke Briscoe

Director and Founder of IndigiLab

Airlie Chapman

Senior Lecturer in the Department of Mechanical Engineering at the University of Melbourne

Alan Duffy

Astronomer and Professor at the Swinburne University of Technology

Mark Elgar

Professor in Evolutionary Biology at the University of Melbourne

Ruth Garde

Curator

Judy Gichoya

Associate Professor, Radiology and Imaging Sciences, Emory University School of Medicine

Natasha Ginwala

Curator and Writer

Jefa Greenaway

Director of Greenaway Architects and Lecturer, Melbourne School of Design, The University of Melbourne

Daniel Harris

Associate Dean, Research & Innovation in the School of Education, RMIT University, Melbourne.

Sanjeev Jain

Professor at the Department of Psychiatry at National Institute of Mental Health And Neurological Sciences (NIMHANS)

Julia Kaganskiy

Curator

Nadine Kaslow

Professor, Psychiatry and Behavioral Sciences and Vice Chair for Faculty Development, Diversity, Equity, and Inclusion, Emory University School of Medicine

Amie Kaufman

Science Fiction Writer

Dolly Kikon

Anthropologist

Ulrike Kluge

Professor for Psychological and Medical Integration and Migration Research at the Charité, University Medicine Berlin

Ariane Koek

Curator

Jayashri Kulkarni

Professor of Psychiatry, Monash University

Maris Kwint

Art Historian

Hannah McCann

Senior Lecturer in Cultural Studies at the University of Melbourne.

Vikram Patel

Professor of Global Health in the Blavatnik Institute's Department of Global Health and Social Medicine at Harvard Medical School

Mark Pollard

Interactive Composition, Melbourne Conservatorium of Music

Cath Roper

Consumer Academic at the Centre for Psychiatric Nursing, The University of Melbourne

Rashmi Sawhney

Associate Professor in Film and Cultural Studies at Christ University.

Claudia Schnugg

Curator

Sabah Siddiqui

Assistant Professor of Psychology at Krea University

Surabhi Sharma

Filmmaker

Sam Sober

Associate Professor, Biology, Emory University

Alicia Sometimes

Writer

Victor Seo

Historian of Science

Mohammad Taha

Researcher at the Faculty of Engineering and Information Technology at the University of Melbourne.

Daniel Tapia Takaki

Physicist, Associate Professor of Physics at the University of Kansas

Tea Uglow

Google's Creative Lab and part of Science Gallery Melbourne Leonardo committee

Sarah J Wilson

PhD FAHMS FASSA, Clinical Neuropsychologist and Pro Vice-Chancellor (Student Life), Former Head, Melbourne School of Psychological Sciences, The University of Melbourne

Richard Wingate

Director of the Centre for Education in the Faculty of Life Sciences and Medicine at King's College London

Anthony WP O'Sullivan

Poet and Author

Alice Taylor-Gee

Wellcome/EPSRC Centre for Medical Engineering

Bella Spencer

Wellcome/EPSRC Centre for Medical Engineering

Carole Keating

Freelance Creative Producer

Christine Aicardi

Department of Global Health & Social Medicine, King's College London

Elena Simperl

Department of Informatics, King's College London

Elizabeth Black

Department of Informatics, King's College London

Gabrielle Samuel

Department of Global Health & Social Medicine

Hetan Shah

Policy Institute, King's College London

Iain Marshall

Department of Population Health Sciences, King's College London

James Budge

School of Biomedical Engineering & Imaging Sciences, King's College London

Jessica Montgomery

King's College London

Joanna Zylinska

Department of Digital Humanities King's College London

Martin Chapman

Department of Population Health Sciences, King's College London

Michael Luck

King's Institute for Artificial Intelligence

Richard Dobson

Centre for Translational Informatics, Maudsley Biomedical Research Centre

Rosemary Hepworth

King's Institute for Artificial Intelligence

Ruba abu Salma

Department of Informatics, King's College London

Tim Hubbard

Department of Medical & Molecular Genetics, King's College London

Andre Uitterlinden

Head of Population Genomics/ Head of Human Genomics Facility, Department of Internal Medicine, Erasmus MC

Bart Rijnders

Internist – Infectious Disease Specialist, Department of Medical Microbiology & Infectious Diseases, Erasmus MC

Casper Rokx

Internist – Infectious Disease Specialist, Department of Medical Microbiology & Infectious Diseases, Erasmus MC

Diederik Gommers

Head of Department, Department of Intensive Care Evelien Dietvorst, Department of Child and Adolescents Psychiatry/ Psychology, Erasmus MC

Eveline Crone

Professor of Developmental Neuroscience in Society, Erasmus MC and Leiden University

Hugo van der Kuy
Head of Department,
Department of Hospital
Pharmacy, Jantien Vroegop,
Audiologist, Department of
Otorhinolaryngology and Head
and Neck Surgery, Erasmus MC

Joyce Lebbink
Principal Investigator, Associate
Professor, Department of
Molecular Genetics, Erasmus MC

Juanita Haagsma
Assistant Professor, Department
of Public Health, Erasmus MC

Luc Coffeng
Assistant Professor, Department
of Public Health, Erasmus MC

Marion Koopmans
Head of Department,
Department of Viroscience,
Erasmus MC

Roos Sablerolles
Department of Clinical
Pharmacy, Erasmus MC

Ron Fouchier
Deputy Head of Department,
Department of Viroscience,
Erasmus MC

Deborah W. Bruner
Senior Vice President
for Research,
Robert W. Woodruff Professor
of Nursing, Professor Radiation
Oncology, Emory University

Kevin Karnes
Associate Dean for Emory Arts,
Executive Director of Center for
Creativity and Arts, Professor in
the Department of Music

Adam Marcus
Deputy Director, Winship Cancer
Institute of Emory University,
Interim Vice President for
Research, Woodruff Health
Sciences Center

Eri Saikawa
Assistant Professor, Department
of Environmental Sciences,
Joint appointment with the
Rollins School of Public Health,
Department of Environmental
Health

Madeleine Hackney
Faculty Research Fellow,
Associate Professor, Department
of Medicine, Member
Birmingham-Atlanta VA GRECC,
Assistant Professor, Emory
University Division of General
Medicine and Geriatrics

Andra Gillespie
Associate Professor, Political
Science, Emory University

Amanda Jacob
Associate Scientist, Biology,
Emory University – Sober Lab

Jason Schneider
Associate Professor, General
Medicine and Geriatrics, Emory
University School of Medicine

Cassandra Quave
Associate Professor of
Dermatology and Human Health,
Center for the Study of Human
Health, Emory University

Tharangamala Samarakoon
Collections Manager, Emory
University Herbarium

Kay Levine
Associate Dean of Research,
Professor of Law, Emory Law

Jeannette Guarner
Professor, Pathology and
Laboratory Medicine, Emory
University School of Medicine

Kate Garber
Associate Professor, Human
Genetics; Director of Education;
Emory University School of
Medicine

Emily Allen
Associate Professor, Human
Genetics, Emory University
School of Medicine

Peter Roberts
Professor of Organization and
Management; Academic Director
of Specialty Coffee Programs,
Business and Society Institute;
Emory Goizueta School of
Business

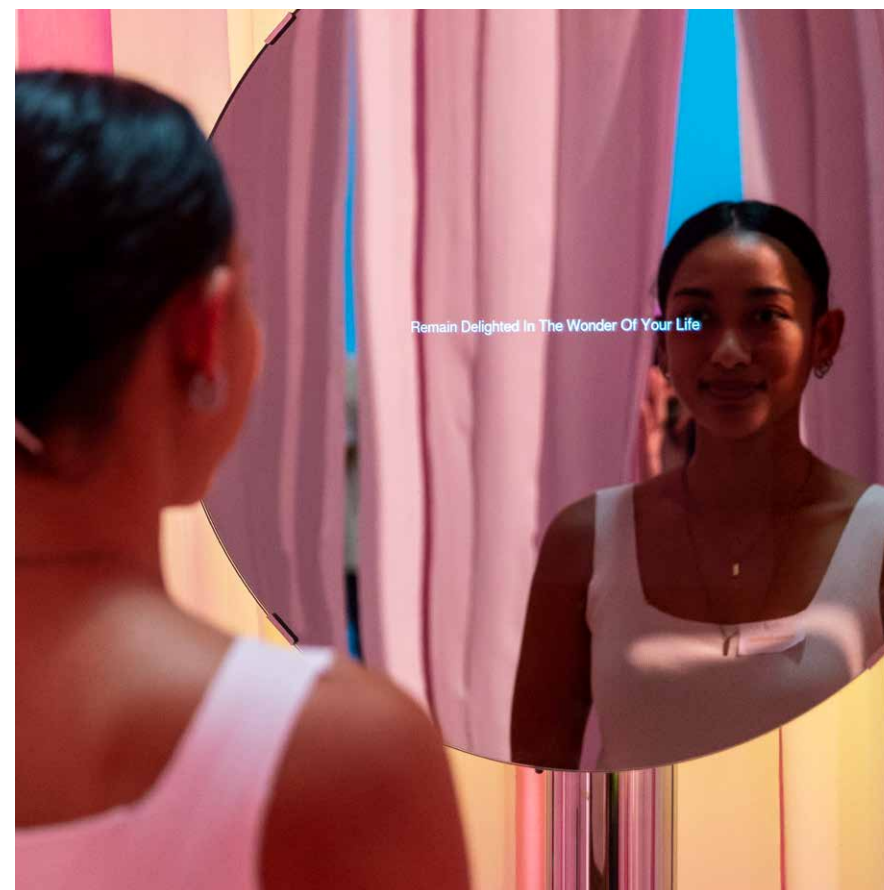
Emily Burchfield
Assistant Professor,
Environmental Science, Emory
University

Jamaji C. Nwanji-Enwerem
Adjunct Assistant Professor,
Environmental Health, Emory
University Rollins School of
Public Health, Emory University
School of Medicine

John Edward Lewis
Grady Health

Carl DiSalvo
Associate Professor, School
of Literature, Media and
Communication; Director of
Public Design Workshop, Georgia
Institute of Technology

Hannah Redler Hawes
Curator



MIRROR RITUAL BY NINA RAJCIC AND SENSILAB

THE EXHIBITIONS 2022–2023



**WHEN YOU SEE THE
PUBLIC AND VERY DIVERSE
AUDIENCES ENGAGING
WITH YOUR WORK I
THINK IT GIVES YOU A
REAL THRILL BUT MOST
IMPORTANTLY I THINK IT
ALLOWS YOU TO THINK
ABOUT YOUR WORK IN NEW
AND DIFFERENT WAYS**

**DR LINDA DOYLE
PRESIDENT AND PROVOST
OF TRINITY COLLEGE DUBLIN**



NIGHT EXCHANGE BY RANDOM QUARK



WHY DO SOME PEOPLE
GET ADDICTED WHILE
OTHERS DON'T?
WILL WE EVER
FULLY UNDERSTAND THE

REASONS THAT INFLUENCE
OUR LIVES, BOTH ON AN
INDIVIDUAL LEVEL AND
ON A PLANETARY

AND UNIVERSAL SCALE?
HOW DO WE UNDERSTAND
OUR RELATIONSHIP TO

CARBON BEYOND THE
CATCH PHRASES AND
CONTRADICTIONS?

WHO HOLDS THE POWER,
WHO DISTRIBUTES THE
BENEFITS, AND WHO

BEARS THE BURDEN OF
EXISTING AI SYSTEMS?

**Science Gallery International
(SGI) is part of the Science
Gallery Network pioneered
by Trinity College Dublin**

SGI Board

Rose Hiscock
Beatrice Pembroke
Ken Arnold
Mary Carty
Linda Doyle
Jahnavi Phalkey
Julie Wells
Terry Wu

SCIENCEGALLERY.ORG
membership@sciencegallery.org



Science Gallery International
is a charity registered in Ireland
(CHY 20125) with registered
offices at 22 Temple Lane South
Dublin D02 HP52 Ireland

CRO Reg. 511842
RCN 20079727